

# ShenZhen Reunion Electronics Co.,Ltd

Reunion Connector, help you connect the World! · 2026

# CATALOG

Company Introduction

PART 1

Product Introduction

PART 2

Application Introduction

PART 3

Shenzhen Reunion Electronics Co., Ltd. is an innovative enterprise that integrates the design, production and sales of connectors and cable assembly. The company has a professional R&D team with extensive experience in the industry. Based on customer needs, it provides customers with professional, efficient and fast high-reliability connector solution products:





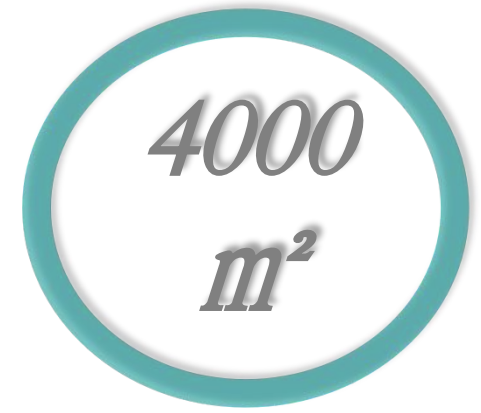
Company Establish



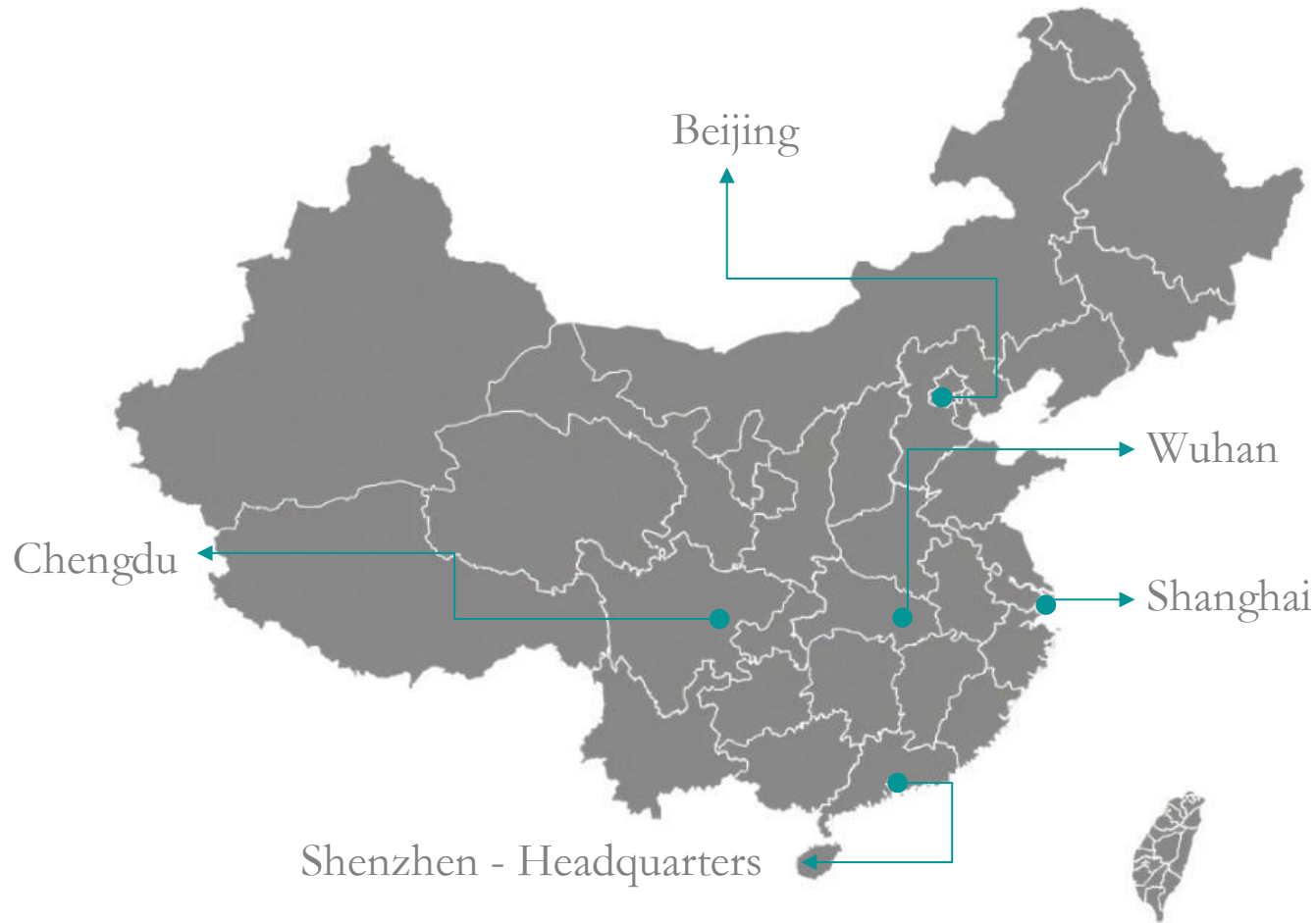
Registered Capital



2026 Employee



Factory Area





» ISO 9001



» ISO 14001



» ISO 13485



· REUNION has an experienced R&D team in the industry, and the products they design and develop have obtained over 30 patents. ;



Overmolding



Molding machine



Contact lathe



Terminal machine



Automatic milling machine



Automatic hot melt



Manual puncing



Automatic peeling



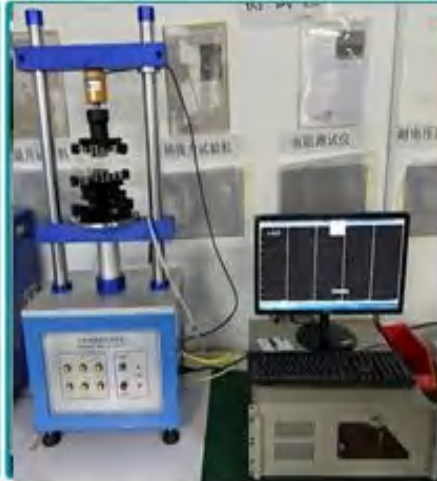
Automatic cutting



Manual lathe



High-Low temp test



Mating cycle test



Salt spray test



Electrical performance test



Image measuring instrument



Pull force test



Conductivity test



Waterproof test





Medical



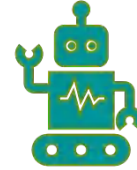
LED



Industry



New Energy



Robot

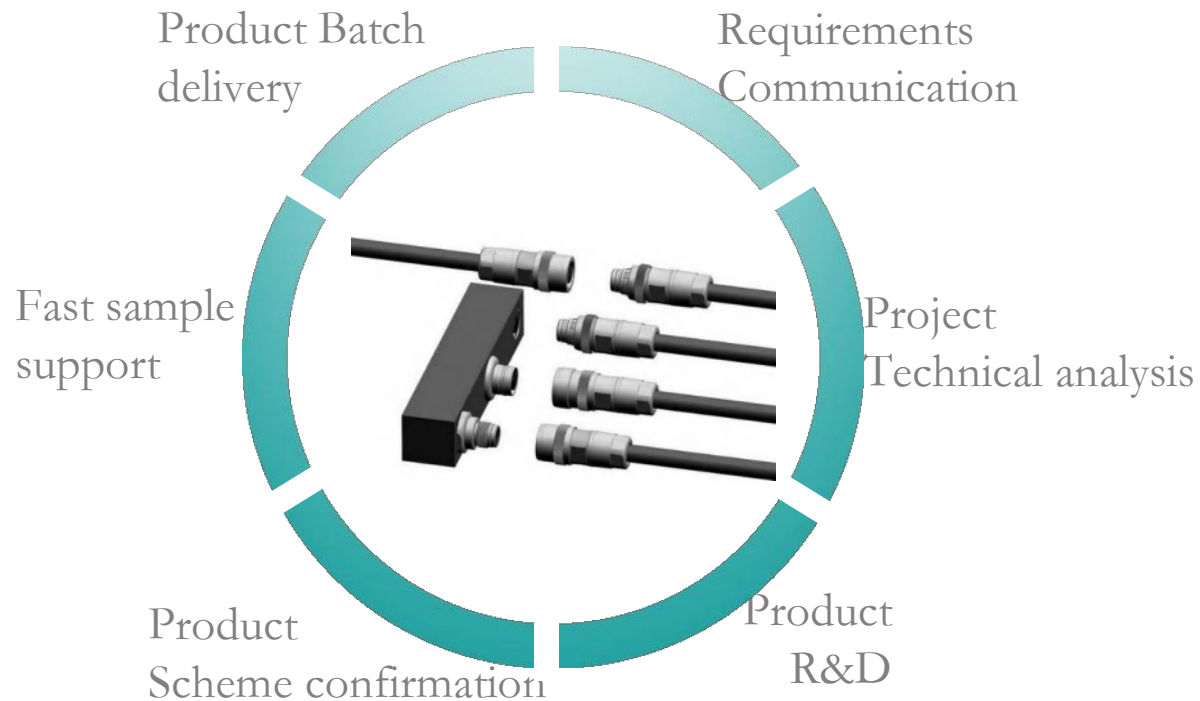


Semi-conductor



Communication

The "REUNION" circular plug-in self-locking connector operated by the company has a quality comparable to that of similar products from Europe and America. And has obtained UL, CE and CQC certifications and is widely used in important fields such as Medical, LED, Industry, New Energy, Semi-conductor and Communication!



· Advantage: Every step of the product's development and delivery process is completed within our company.

Full-process quality control ensures that every connection we provide can fully meet your requirements.



· Flexible and reliable: Especially in the application of disposable medical solutions, the P series is an ideal solution!

- Multi core type  
1P series:2~14Pins  
2P series:3~16Pins
- Mating cycle:>2000 times

- Welding, PCB and cable solder
- IP level: IP50/IP65
- Temperature: -40°C ~+80°C



- Multi core: 2~32Pins
- Multiple position pin optional can avoid mixedinsertion.
- 360° shielding EMC protection
- PCB and cable solder
- Mating cycle:>5000 times
- IP level: IP50/IP68
- Temperature: -45°C ~+125°C
- Vibration: 10~2000Hz, 15g
- Mechanical shock: 100g, 6ms;
- Salt spray: >48H



- M5、 M8、 M9、 M12、 M15、 M16
- Multiple position pin optional can avoid mixedinsertion
- Shielded / Unshielded can optional

- PCB and cable solder
- IP level: IP67
- Temperature: -20°C ~+80°C



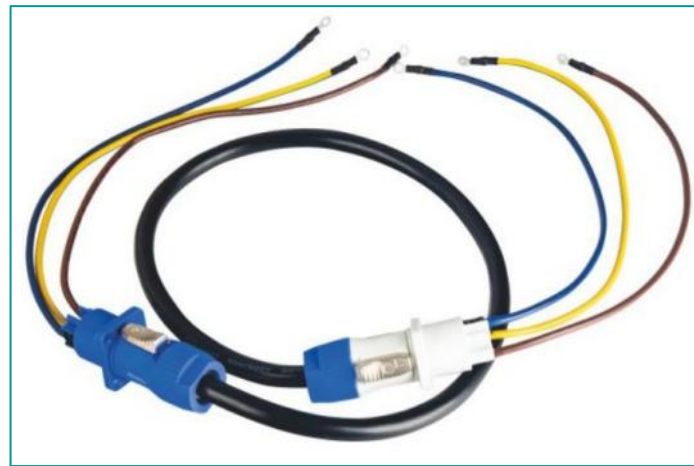
- Multiple position pin optional can avoid mixedinsertion
- Multi core: 2~10Pins, hybrid pins support
- PCB and cable solder
- IP level: IP67
- Temperature: -20°C ~+80°C



• Due to the specific hygiene and mechanical requirements in the medical technology field, we can offer personalized silicone coating system solutions, including the assembly of connectors and accompanying cables, as well as silicone coating. The products are made of high-quality materials, have non-sticky surfaces and properties that can withstand tests, are easy to clean, can be sterilized by steam, and are not sensitive to extreme temperatures!



· The product is widely used in new energy projects and can be customized according to the project requirements. It is also exported to the European and American markets and has received high praise from customers. ;



• The product is widely used in LED display, LED lighting. Power and Signal input/output. The mating cycle is over 2000 times. The product structure design meets the IP50/IP67 protection level. It can still ensure good electrical insulation performance in high-temperature and high-humidity environments. Customized solutions can be provided according to project requirements. It is applied to the leading brand customer groups in the industry and has received unanimous praise from customers.

# APPLICATION

---

# 射频等离子手术系统

Radio frequency plasma surgery system



2.5P plastic push-pull 2+6pins



2B metal push-pull 6pins



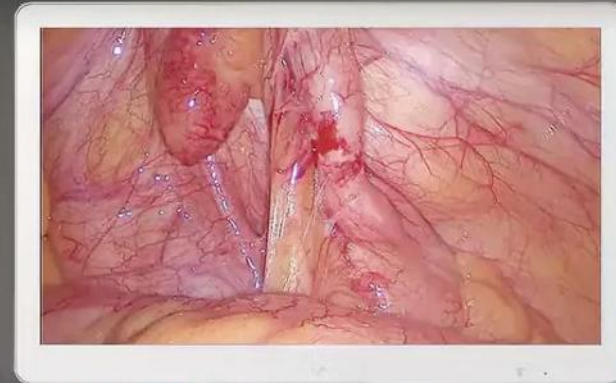
## FHD-LP-4000R

Full HD 1080p 2.4 Megapixel Endoscopy Camera  
with Inbuilt Recorder



## Endoscopy Laparoscopic Camera

Full HD Imaging with inbuilt Medical Recorder



1B metal push-pull 1+4 coaxial series  
2B metal push-pull 1+6 coaxial series





1B metal push-pull 2、3Pins



1P plastic push-pull 6Pins





1P plastic push-pull 5, 8Pins





1P plastic push-pull 40 degree,  
60 degree 2、3、4、7、9Pins





- ✔ 深达4.5mm浅筋膜层
- ✔ 能量多层覆及
- ✔ 安全舒适

3B metal push pull 1+16Pins coaxial series



Handle





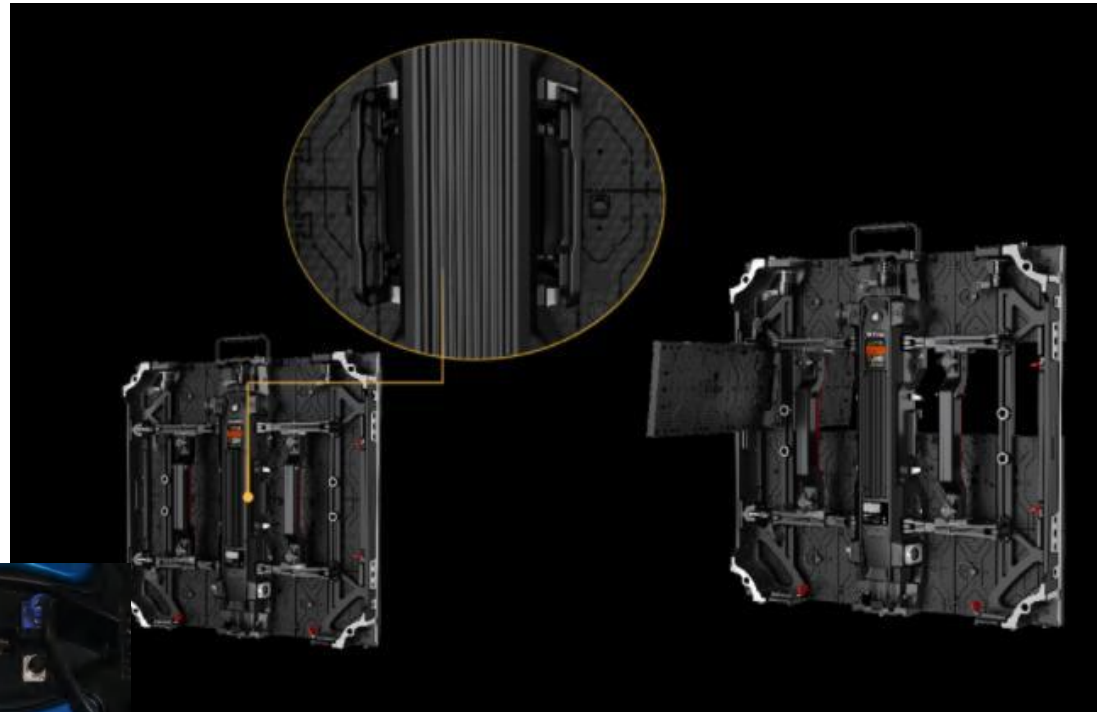
IVL catheter plug



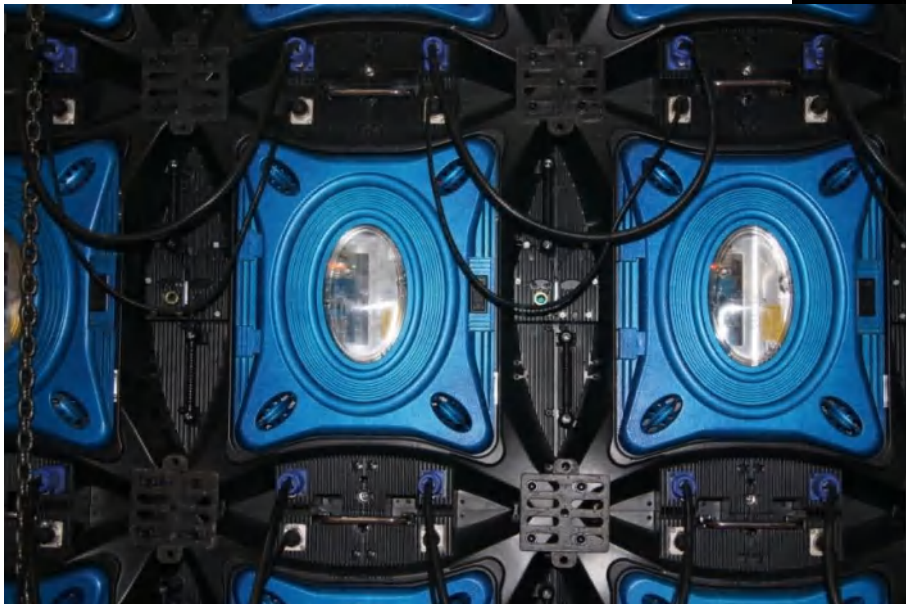
IVL handle



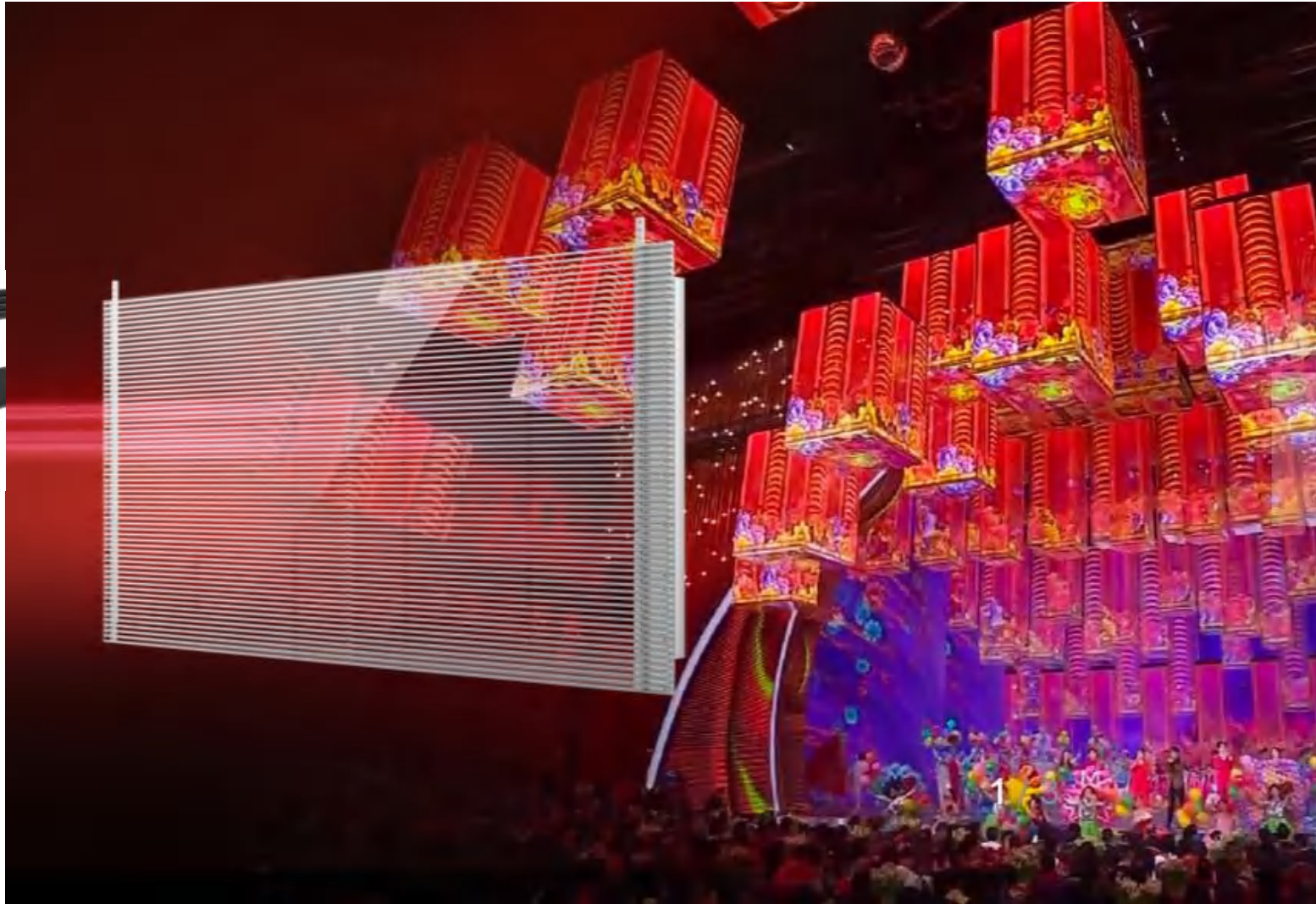
### 3N 3Pins power connector



### 3N RJ45 signal connector



1X2+2 hybrid  
connector



1X2+2 pins, 3N power and 3N RJ45 signal series



Flat H series 3Pins  
PDB,SDB plastic connector



# 4K screen of Shenzhen Radio and Television Building:

REUNION®

1M, 2M series hybrid connector



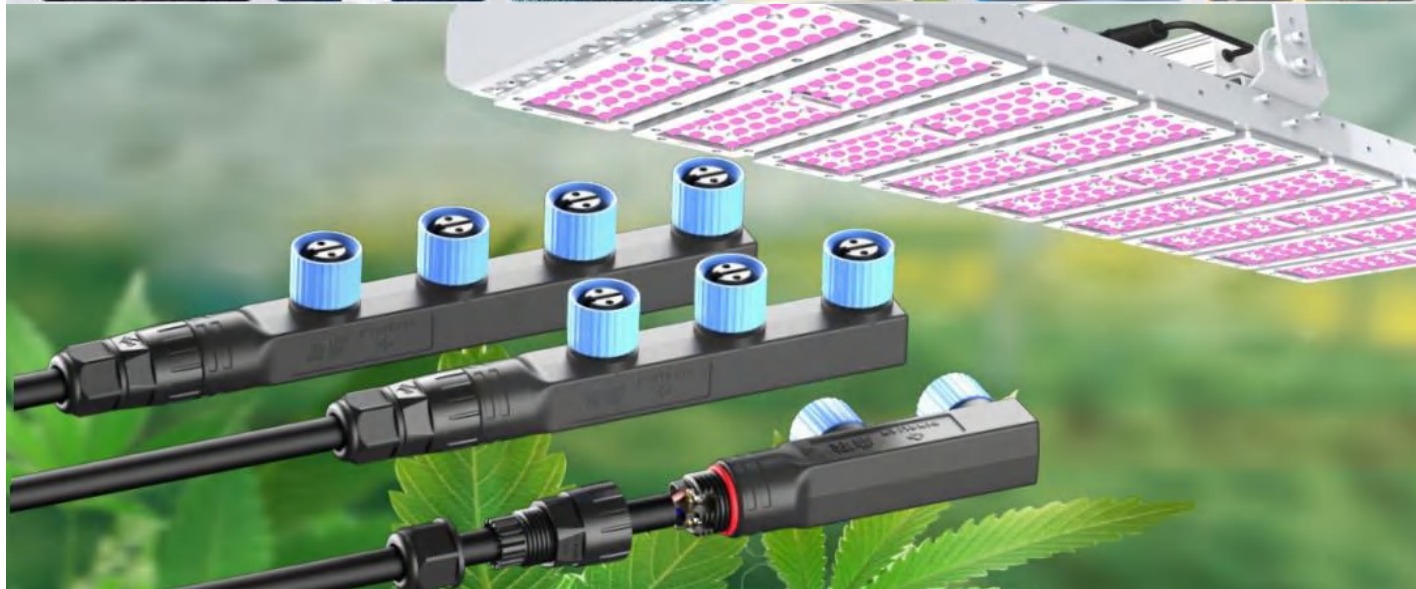
## M15、M16、 M20、 M25 series plastic waterproof connector

### 应用场景

#### APPLICATION SCAENARIOS

主要用于户外防水设备，LED户外灯，模组灯，路灯，隧道灯

Mainly used for outdoor waterproof equipment, LED outdoor light, module light, street light, tunnel light



K metal push pull  
waterproof series



## M16 Threaded series





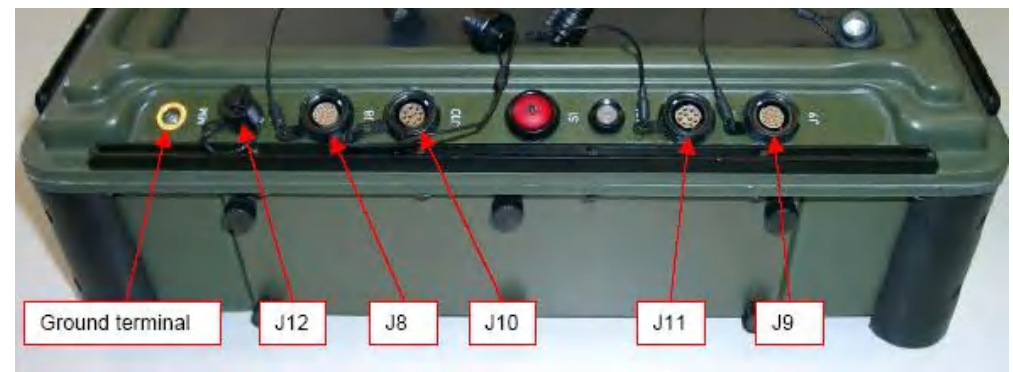
M16 Threaded series



F metal push pull waterproof series



K, F metal push pull waterproof series



## M5、M8、 M12 series





AUUSI XPONENTIAL  
Dallas 2017



SPS IPC Drives  
Nuremberg 2017



INTERGEO  
Berlin 2017



ISE  
Amsterdam 2017



INTERNATIONAL LIGHTING  
GUANGZHOU 2018



INTERNATIONAL LIGHTING  
GUANGZHOU 2018



Electronica  
Munich 2018



Hannover Messe  
2019



LED China Shenzhen 2019



CMEF China Shanghai 2019



Infocomm Orange, FL 2019



CMEF China Shanghai 2021



Medical 2022



LED Shenzhen 2023



CMEF China Shenzhen 2024



CMEF China Shenzhen 2024